



Composition

Chameledec is a mixture of 100% pure Cellulose cotton in the form of fibrous strings with cellulose resin gum, coloured by natural dyes, with the option to add minor decorative components. Cellulose is an organic compound with the formula $(C^6H^{10}O^5)_n$, a polysaccharide consisting of a linear chain of several hundred to many thousands of $\beta(1 \rightarrow 4)$ linked D-glucose units. Cellulose is an important structural component of the primary cell wall of green plants, Cellulose is the most abundant organic polymer on Earth.

Preparation of substrates

Chameledec can be applied to numerous wall and ceiling substrates directly without prior preparation including plaster, wood, cement, oil and acrylic decorated surfaces. It is recommended that loose flaking paints and powdered surfaces are removed along with the treatment of any damp areas prior to the application of Chameledec. Existing wallpaper must be removed along with the adhesives due to its debonding attributes following exposure to water. Oil and heavy staining should again be removed or treated prior to the application of Chameledec. PVA sealers can be used on very pourous and gloss surfaces to aid the adhesion with Chameledec.

COLOURS



Black 116



Brown 119



Dark Beige 108



Dark Red 132



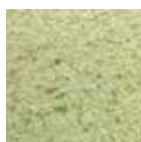
Light Beige 102



Light Brown 112



Light Green 120



Light Green Mix 126



Light Pink Mix 141



Mid Pink Mix 138



Mid Blue 121



Mid Green Mix 123



Orange 139



Orange Mix 136



Purple 137



Red 133



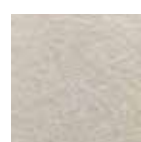
Silver 125



Terracotta 145



Turquoise Blue 124



White 101

GLITTER



Glitter 240

Chameledec preparation

Ensure the proposed container is clean and free from any possible contaminants and or former specialised mixes of Chameledec. Assess the area to be covered and place the appropriate quantity of Chameledec into the clean mixing vessel.

Add the decorative flecks or glitters as desired (when mixing with decorative additives the mix ratio should be recorded for reproduction of the same colour in future mixes if required, this is to maintain colour consistency. Dry mix, if using additives prior to the water being added.

Add the appropriate clean water to the Chameledec (5 litres per each kilogram of Chameledec) and mix by hand until a dough consistency has been achieved for approximately 15 to 20 minutes. Water or Chameledec can be added to achieve the ideal consistency (we do recommend you record any additions for future mixes to ensure continuity).

Leave to rest for 30 minutes for activation of the adhesive binders to occur, after the rest period remix the product to ensure an even colour and texture consistency has been achieved.

FLECKS



Black 241



Blue 252



Dark Red 248



Green 251



Orange 243



Pink 250



Purple 249



Red 247



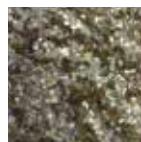
Yellow 244



White 246



Silver 242



Gold 245

Application

Chameledec is applied using a plastic trowel. Place Chameledec onto the trowel and apply to the substrate smoothing it onto the surface to achieve a consistent coverage. Chameledec will remain in its unset form within the mixing vessel for up to 24 hours of mixing, this allows time for revisiting applied areas should the need arise. If the area being covered is scraped or damaged during application simply work the material back into the damaged areas with the trowel, there is no need for more material to be added to rectify any damage during application.

Chameledec has a seamless quality that allows large areas to be covered during multiple visits, re-visits to work within 24 hours have no effect on the overall coverage and form no visual seams.

Re-visits to work with new material on existing work after 24 hours will require the following: -

Using a spray bottle, moisten the leading edge of the existing work back by 50mm and leave to soak in for 15 to 25 minutes applying more water depending upon the thickness. This hydrates the existing material and allows you to add new material without seams forming.

Dropped material can be collected from the floor and re-used as long as no contamination has occurred from debris present on the floor which would affect the consistency of the material.

Surplus mixed Chameledec should be stored in sealed containers in a cool area for up to 24 hours if to be used again on the same substrate. Unmixed Chameledec should be re-sealed in its bag and stored in a dry and cool place.





Unit 1-5, Somersham Road, Woodhurst, Huntingdon, Cambridgeshire. PE28 3BP



UK: +(44) 1480 466696



Email: info@chameledec.co.uk